

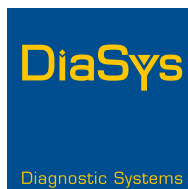
respons[®]240c

Precision in compactness



Member of the respons[®]c-line

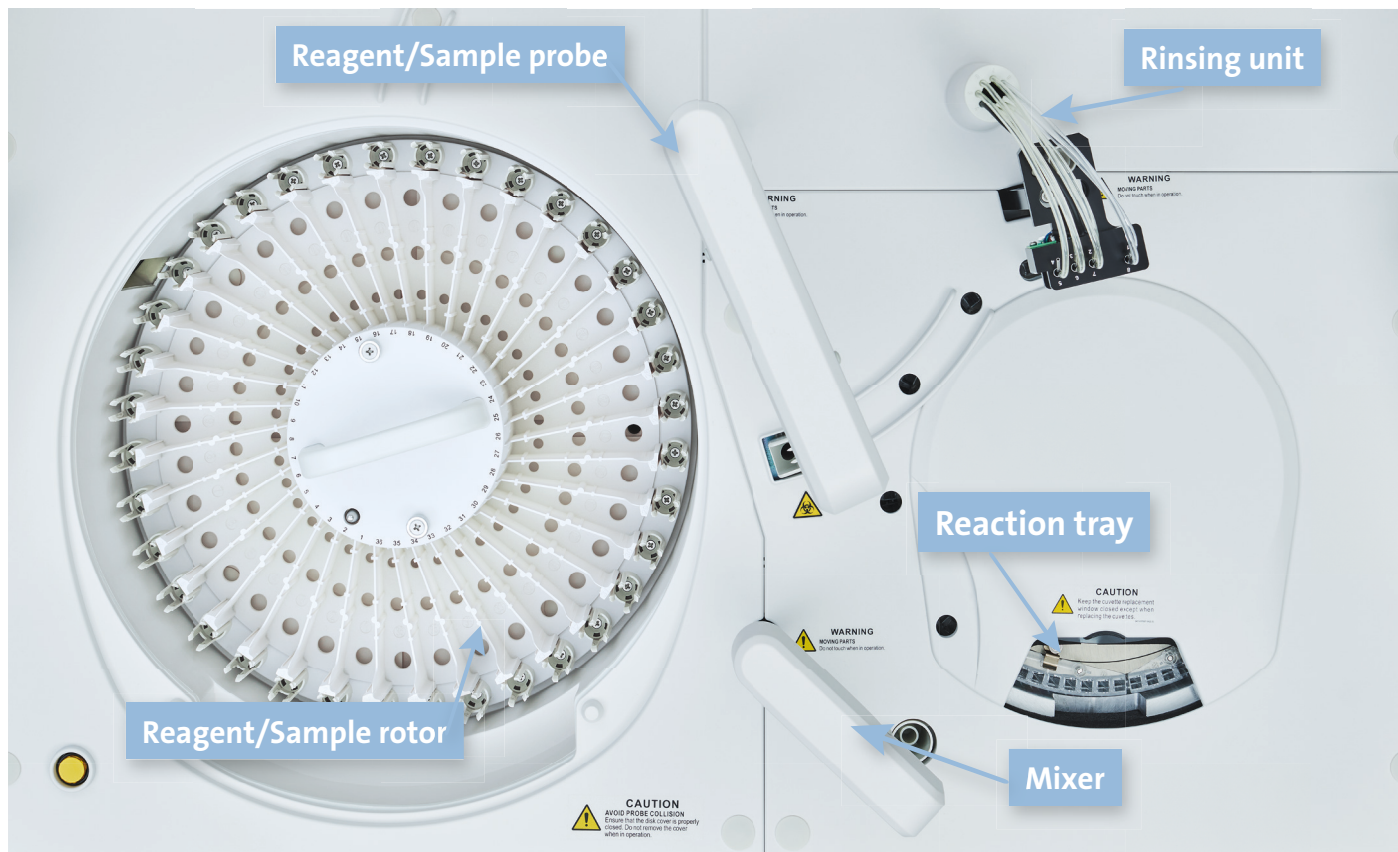
DiaSys. Total confidence in patient results.




CHOOSING QUALITY.

respons[®]240c at a glance

Experience efficient and reliable laboratory testing with respons[®]240c. This fully automated bench top analyzer is perfect for small laboratories since it offers a constant throughput of 240 tests per hour (400 tests/hour incl. optional ISE). Its compact design and user friendly interface provides a valuable asset to any laboratory. Benefit from low operating costs, minimal maintenance and precise results.



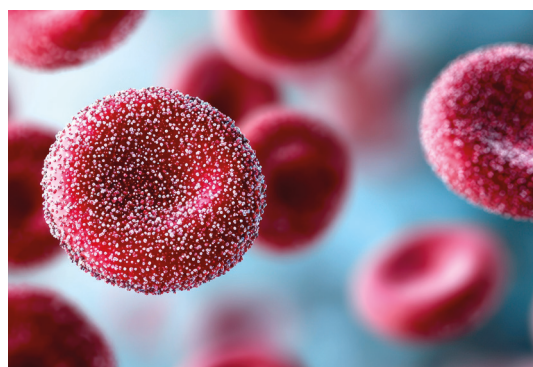
Reaction system

- Grated photometer with 12 wavelengths for a maintenance free operation
- Wide photometric linearity up to 3.5 OD to minimize the need of reruns
- Maintenance free thermostatzation of cuvettes by air heating
- Twin test functionality for DiaSys HbA1c  FS



Advanced HbA1c testing

- Fully automated on board hemolysis of whole blood samples to eliminate time consuming and error prone manual steps
- HbA1c smart sampling
 - Sampling at bottom of tube for a sufficient aspiration of erythrocytes for HbA1c determination
 - Deep washing of sample probe to minimize carry over after whole blood sampling



Performance data (preliminary)

Outstanding precision and excellent recovery of serum based controls TruLab N and TruLab P.

Parameter	Unit	Sample value	CV [%]*	Recovery of controls [%]**	
				TruLab N	TruLab P
ALAT	U/L	49.8	0.96	101	100
CHOL	mg/dL	131	0.78	97.6	100
CREA PAP	mg/dL	1.32	1.14	100	101
GGT	U/L	30.0	1.54	97.5	97.5
HDL-c direct	mg/dL	36.2	1.96	98.7	102
LDL-c direct	mg/dL	105	1.17	101	105
Lipase	U/L	42.6	1.75	101	97.4
Lp(a)	nmol/L	37.3	1.86	97.0	99.1
TP	g/dL	6.36	1.37	99.5	100
TRIG	mg/dL	81.5	0.67	95.3	96.5
UREA	mg/dL	44.4	0.79	100	97.7

* n=20, ** n=5

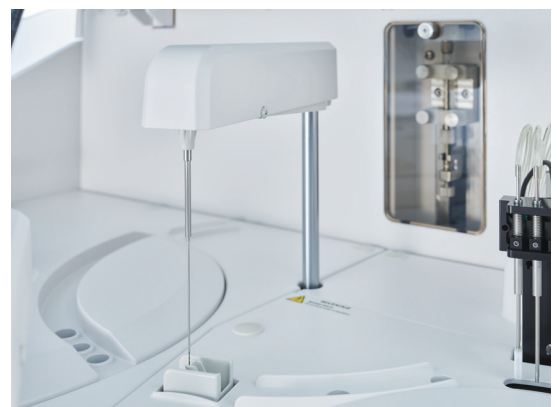
Reagent/Sample rotor

- On board capacity of up to 36 DiaSys respons® bottles
- Refrigerated reagent rotor (2-12°C)
- Convenient one grip loading of respons® bottles also for two component reagents to eliminate the risk of misplacements
- 36 flexible positions for samples/calibrators/controls
- Barcoded bottles – automatic connection to pre-programmed applications

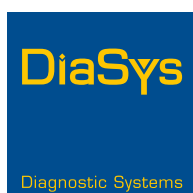


Reagent/Sample probe

- Liquid level detection system to prevent dry aspiration and to ensure accurate sample handling
- Collision detection to avoid probe damage
- Real time inventory monitoring to offer best overview of remaining tests
- Sample clot detection for improved result reliability



Technical specifications	
Throughput	240 tests/hour (400 tests/hour incl. optional ISE)
Sample types	Serum, plasma, urine, whole blood
Sample volume	2-35 µL, 0.1 µL steps
Reagent/Sample probe	Liquid level detection, clot detection and collision protection
Reagent pipetting	10-200 µL, 0.5 µL steps
STAT-analytics	Yes
Ion measurement	ISE upgrade kit available
Barcode identification	Sample, reagent
Sample tray	36 samples
Reagent on board capacity	34 responS [®] containers cooled to 2-12°C
Reaction unit	80 cuvettes, 8-step auto-washing
Photometry	Grating system, 12 wavelengths (340, 380, 412, 450, 505, 546, 570, 605, 660, 700, 740 and 800 nm)
Photometric linearity and resolution	0-3.5 OD, 0.0001 OD
Water consumption	< 6.5 liters per hour
Dimensions	86 cm (W) × 66 cm (D) × 55 cm (H)
Weight	approx. 115 kg



Handed out by:

DiaSys
Diagnostic Systems GmbH
 Alte Strasse 9
 65558 Holzheim
 Germany

Phone: +49(0)64 32/91 46-0
 Fax: +49(0)64 32/91 46-32
 E-Mail: info@diasys.de
www.diasys-diagnostics.com