



Identification and Antimicrobial Susceptibility testing: BD Phoenix™ automated identification and susceptibility testing

BD Phoenix™ System



Cat. No.	Description	Quantity
	BD Phoenix™ M50 - Instrument	
443624	The BD Phoenix™ M50 ID/AST system is a reliable instrument that requires no preventative maintenance, thanks to innovative materials and engineering techniques employed during its development. In addition to being robust, the system offers multiple languages, facilitating even broader adoption in laboratories around the world. The BD Phoenix™ M50 system also offers integration with multiple other analysers, including the BD BACTEC™ and BD Bruker™ MALDI Biotyper systems, through BD EpiCenter™ middleware connectivity that enables data traceability and flexible communication capabilities. Up to 2 modular units can be connected to increase system to 100 panel capacity. ¹	1
	BD PhoenixSpec™ Nephelometer	
440910	A battery-powered, portable device designed for measuring inoculum density in McFarland units. Used with BD PhoenixSpec™ - Calibration Standards, Cat. No. 441951.	1
	BD PhoenixSpec™ Calibration Standards	
441951	Contains BD Phoenix™ calibration standard (0.25 / 0.5 / 1.0 / 2.0 / 4.0 McFarland). Used for the proper calibration of a BD Phoenix™ Nephelometer.	1
	BD Phoenix™ Pipette Tips	
448037	Extra long, aerosol-resistant pipette tips for use with the BD Phoenix™ 25 µl Hamilton-Pipette. Packaged as 204 tips per rack; 8 racks per shelf pack (in total 1632 pipette tips).	1632 tips
246001	BD Phoenix™ ID Broth	100 x 4.5 ml
246005		100 x 2.2 ml
246003	BD Phoenix™ AST Broth	100 x 8 ml
246004	BD Phoenix™ AST Indicator	10 x 6 ml
246007	BD Phoenix™ AST-S Broth	100 x 8 ml
246009	BD Phoenix™ AST-S Indicator	10 x 6 ml
246016	BD Phoenix™ AST broth 12.5ml - Emerge	100 x 12.5ml
246015	BD Phoenix™ AST Indicator- Emerge	10 x 6 ml

1. BD Phoenix™ M50 User's Manual



BD Bruker MALDI Biotyper®

4th generation of Bruker's benchtop MALDI Biotyper® systems. Robust, compact, high performance platforms intended for extensive and routine usage in the microbiology laboratory. Bruker's proprietary lifetime* smartbeam laser

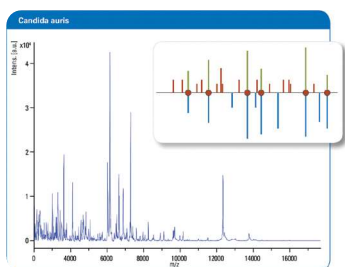
- 200 Hz repetition rate
- ~400 samples/hr
- 500 million laser shots



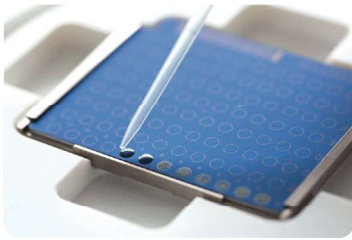
Cat. No.	Description	Quantity
1890112	MALDI Biotyper®-Sirius IVD System	1
1890113	MALDI Biotyper®-BD Sirius IVD System (BD Branded)	1
1890212	MALDI Biotyper® Sirius one IVD System	1
1890213	MALDI Biotyper®-BD Sirius One IVD System (BD Branded)	1

MBT Compass IVD Modules and Libraries

Cat. No.	Description	Quantity
1832771	MBT Compass IVD-Upgrade	1
1836418	MBT Compass IVD-Upgrade additional license	1
1834206	MBT Sepsityper IVD Module	1
1850731	MBT Mycobacteria Suite IVD	1
1850769	MBT Mycobacteria Library IVD (for updates only)	1
1850907	MBT STAR-BL SW Bundle IVD	1
1834056	MBT Satellite IVD Module	1
1836419	MBT Satellite IVD Module additional license	1
1836420	MBT Compass IVD Library	1
1846904	MBT IVD Library Extension	1



* Lifetime means: 500 million laser shots or seven years (whichever occurs first)



Additional MBT Compass Modules and libraries

Cat. No.	Description	Quantity
1828476	MBT Explorer Module	1
1836417	MBT Explorer Module additional license	1
1842250	MBT Subtyping Module	1
1867813	MBT Filamentous Fungi Suite	1
8254705	Database-CD BTyp2.0-Sec.Library 1.0	1
1829014	MBT Filamentous Fungi Library (for updates only)	1



MBT Workflow Optimization and respective consumables

Cat. No.	Description	Quantity
1836006	MBT Pilot System IVD	1
1836007	MBT Galaxy System IVD	1
1827419	MBT Galaxy HCCA Matrix IVD	1
1819125	MBT Galaxy Filter Module	1
1878263	MBT FAST Shuttle IVD	1



MBT Accessories

Cat. No.	Description	Quantity
8604966	Reference Physiocare Pack Eppendorf	1
1892790	Reference Physiocare Pack Eppendorf GLP	1
1847032	MBT-Shuttle	1
8268821	Scanner, Hand-held CCD Hyperion 1300G	1
8276754	Holder for Barcode Scanner	1

MBT Consumables and Assays

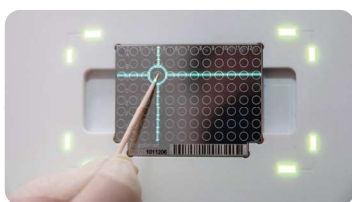
Cat. No.	Description	Quantity
8255343	Bruker Bacterial Test Standard	5 tubes
8255344	Bruker Matrix HCCA portioned	1
8290190	IVD Bacterial Test Standard	1
8290200	IVD Matrix HCCA -portioned	1
8270170	MBT Sepsityper Kit (RUO)	1
1834338	MBT Sepsityper IVD Kit	1
1848467	MBT STAR-Carba IVD Kit	1
1858555	MBT STAR-Cepha IVD Kit	1
1853031	MBT STAR-BL Service Kit	1
1818702	MBT STAR-ACS (calibration standard)	1
1889119	MBT Mycobacteria Kit	1
1889112	MBT Lipid Xtract Kit	1





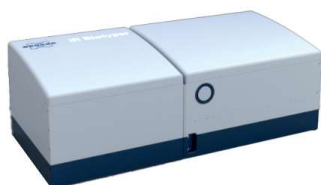
MBT Target Plates and Adapter

Cat. No.	Description	Quantity
8280800	MSP 96 target polished steel BC	1
1839298	MALDI Biotarget IVD CE	1
8267615	MSP Adapter for MALDI Biotarget	1



Bruker IR Biotyper® System and Consumables

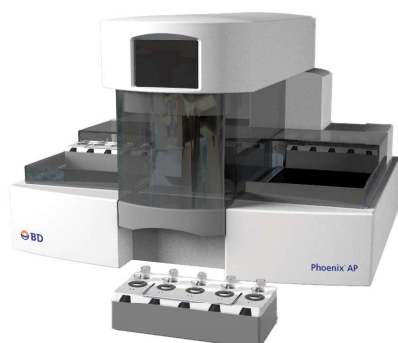
IR Biotyper uses Fourier Transform Infrared (FT-IR) spectroscopy to analyse the molecular vibrations caused by absorption of infrared light to classify microorganism strains with high specificity. Efficient microorganism strain typing is vital in healthcare settings for infection control, epidemiological studies, and to better understand the causes of infection.



Cat. No.	Description	Quantity
1845471	Bruker IR Biotyper®	1
1851760	Bruker IR Biotyper® Kit	1

BD Phoenix™ AP System

Cat. No.	Description	Quantity
	BD Phoenix™ AP (AutoPrep Station)	
448010	This is a companion to the BD Phoenix™ system that assists laboratories with workflow efficiency and standardized isolate inoculum. It is the first instrument to incorporate automated nephelometry for inoculum preparation— one of the most time consuming steps associated with isolate preparation.	1
448014	BD Phoenix™ AP Waste Liquid Bottle	10
	BD Phoenix™ AP Pipette Tips	
448038	Extra long, aerosol-resistant pipette tips for use with the BD Phoenix™ AP.	960 tips
448012	BD Phoenix™ AP ID Solution	5 x 800 ml
246006	BD Phoenix™ AP AST Indicator	10 x 6 ml
246011	BD Phoenix™ AST broth-Emerge	100 x 4.5ml




BD Phoenix™ Combo Panels (ID and AST)

Gram Negative MIC Panels							
BD reference number	448446	448804	448874	448876	448877	449046	449052
Panel Name	UNMIC-416	UNMIC-409	NMIC-402	UNMIC-403	NMIC-408	NMIC-433	UNMIC-432
Guideline	EUCAST	EUCAST	EUCAST	EUCAST	EUCAST	EUCAST	EUCAST
Antimicrobial (µg/ml) concentration range							
PENICILLIN							
Ampicillin (AM)	2-8	2-8	2-8	2-8	2-8	4-16	4
Piperacillin (PIP)	-	-	4-16	-	4-16	-	-
Mecillinam (MEC)	2-8	-	-	-	-	-	-
Temocillin (TEM)	2-8	4-32	-	-	4-32	-	-
Ticarcillin (TIC)	4-16	-	-	-	-	-	-
β-LACTAM COMBINATION AGENT							
Amoxicillin-Clavulanate (f) (AXC)	2-32	2-32	2-32	2-32	2-32	2-16	2-32
Ampicillin-Sulbactam (f) (SXA)	-	-	-	-	-	1-8	-
Ceftolozane-Tazobactam (CT)	-	-	-	-	-	1-4	-
Piperacillin-Tazobactam (TZP)	4-16	4-16	4-16	4-16	4-16	4-16	4-32
CEPHEMS							
Cefazolin (CZ)	-	-	-	-	-	4-32	4-32
Cefepime (FEP)	0.5-4	1-8	1-8	1-8	1-8	1-8	-
Cefixime (CFM)	0.25-1	-	-	0.5-2	-	-	0.5-4
Cefotaxime (CTX)	1-4	-	1-4	1-4	-	-	-
Cefoxitin (FOX)	4-16	4-16	-	-	4-16	-	-
Ceftazidime (CAZ)	-	1-8	0.5-8	0.5-8	1-8	1-8	2-16
Ceftriaxone (CRO)	-	1-4	-	-	1-4	1-4	1-4
Cefuroxime (CXM)	-	2-8	2-8	2-8	2-8	4-16	-
Cephalexin (CN)	4-16	-	-	4-16	-	-	-
CARBAPENEMS							
Ertapenem (ETP)	0.125-1	0.25-1	0.25-1	0.25-1	0.25-1	0.25-1	0.25-2
Imipenem (IPM)	0.25-8	0.25-8	0.25-8	0.25-8	0.25-8	0.25-8	0.25-8
Meropenem (MEM)	-	0.125-8	0.125-8	0.125-8	0.125-8	0.125-8	0.125-8
LIPOPEPTIDES							
Colistin (CL)	-	-	1-4	-	1-4	1-4	-
AMINOGLYCOSIDES							
Amikacin (AN)	4-16	4-16	4-16	-	4-16	8-32	8-32
Gentamicin (GM)	1-4	1-4	1-4	1-4	1-4	2-8	2-8
Tobramycin (NN)	-	-	1-4	1-4	1-4	-	2-8
TETRACYCLINES							
Tigecycline (TGC)	-	-	0.5-2	0.5-2	0.5-2	0.5-2	1-4
FLUOROQUINOLONES							
Ciprofloxacin (CIP)	0.25-1	0.25-1	0.25-1	0.25-1	0.25-1	0.0625-1	0.25-1
Levofloxacin (LVX)	-	-	0.5-2	-	0.5-2	0.5-2	0.5-4
Norfloxacin (NOR)	0.5-2	0.5-2	-	-	-	-	-
NITROFURAN							
Nitrofurantoin (FM)	16-64	16-64	-	16-64	-	-	32-128
FOSFOMYCINS							
Fosfomycin w/G6P (FF)	16-128	16-64	16-64	16-64	-	-	16-64
FOLATE PATHWAY ANTAGONIST							
Trimethoprim (TMP)	-	1-4	-	1-4	-	-	-
Trimethoprim-Sulfamethoxazole (SXT)	1-4	1-4	1-4	1-4	1-4	2-8	2-8
QUINOLONE							
Nalidixic Acid (NA)	8-32	-	-	-	-	-	-
OTHER							
CPO detect	No	No	No	No	No	No	No
CPO detect Ambler class	No	No	No	No	No	No	No
ESBL	Yes	Yes	Yes	Yes	Yes	Yes	Yes





Gram Negative Emerge Panels								
BD reference number	448764	449001	449023	449025	449041	449056	449727	449728
Panel Name	NMIC-203	NMIC-417	NMIC-500	NMIC-502	NMIC-501	NMIC-505	NMIC-474	NMIC-475
Guideline	CLSI	EUCAST	CLSI	EUCAST	CLSI	EUCAST	EUCAST	EUCAST
Antimicrobial (µg/ml) concentration range								
PENICILLIN								
Ampicillin (AM)	4-16	2-8	4-16	2-8	4-16	4-16	2-8	2-8
Amoxicillin (AMX)	-	-	-	-	-	4-32	-	-
Piperacillin (PIP)	-	4-64	-	4-64	-	-	-	-
Mecillinam (MEC)	-	2-8	-	2-8	-	-	-	2-8
Temocillin (TEM)	-	4-32	-	4-32	-	-	4-32	4-16
β-LACTAM COMBINATION AGENT								
Amoxicillin-Clavulanate (AMC)	4-16	-	-	-	-	-	-	-
Amoxicillin-Clavulanate (f) (AXC)	-	2-32	-	2-32	-	2-32	2-32	2-32
Ampicillin-Sulbactam (f) (SXA)	-	-	-	-	-	1-4	-	-
Ampicillin-Sulbactam (SAM)	-	-	4-16	-	4-16	-	-	-
Ceftazidime-Avibactam (CZA)	-	-	0.25-8	0.25-8	0.25-8	0.25-16	0.25-8	0.25-8
Ceftolozane-Tazobactam (CT)	-	-	-	-	1-8	0.5-2	0.5-4	0.5-4
Meropenem-Vaborbactam (MEV)	-	-	-	-	-	-	2-8	2-8
Piperacillin-Tazobactam (TZP)	4-64	4-64	4-64	4-64	4-64	4-32	4-64	4-16
Ticarcillin-Clavulanate (TIM)	4-64	4-64	-	-	-	-	-	-
CEPHEMS								
Cefazolin (CZ)	1-8	-	2-16	-	2-16	4-32	-	-
Cefepime (FEP)	0.5-16	1-16	1-16	1-16	1-16	1-16	1-8	1-8
Cefixime (CFM)	-	0.5-2	-	0.5-2	-	0.5-2	-	-
Cefotaxime (CTX)	-	-	-	-	-	1-4	-	-
Cefoxitin (FOX)	4-32	4-16	4-16	-	4-16	-	4-16	-
Ceftazidime (CAZ)	0.5-32	0.5-16	-	-	-	-	-	-
Ceftazidime (CAZ)	-	-	0.5-16	0.5-8	0.5-16	1-16	0.5-16	0.5-8
Ceftriaxone (CRO)	0.5-32	0.5-4	0.5-4	0.5-4	0.5-4	1-4	0.5-4	1-4
Cefuroxime (CXM)	-	2-8	4-16	2-8	4-16	4-16	2-8	2-8
Cephalexin (CN)	4-32	4-16	-	4-16	-	-	-	4-16
MONOBACTAMS								
Aztreonam (ATM)	0.5-16	1-16	1-16	1-16	1-16	-	1-16	1-16
CARBAPENEMS								
Ertapenem (ETP)	0.25-2	0.25-1	0.25-1	0.25-1	0.25-1	0.25-2	0.25-1	0.25-1
Imipenem (IPM)	1-8	0.25-8	0.25-8	0.25-8	0.25-8	0.25-8	0.25-8	0.25-8
Meropenem (MEM)	0.25-16	0.25-8	0.25-32	0.125-8	0.25-32	0.125-8	0.125-16	0.125-8
LIPOPEPTIDES								
Colistin (CL)	1-4	1-4	1-4	0.5-2	1-4	1-4	0.5-4	0.5-4
AMINOGLYCOSIDES								
Amikacin (AN)	4-32	4-16	4-32	4-16	4-32	4-32	4-16	4-16
Gentamicin (GM)	1-8	1-4	2-8	1-4	2-8	1-4	1-4	1-4
Tobramycin (NN)	1-8	1-4	-	1-4	-	2-8	1-4	1-4
TETRACYCLINES								
Minocycline (MI)	-	-	1-16	-	1-16	-	-	-
Tetracycline (TE)	2-16	-	-	-	-	-	-	-
GLYCYLCYCLINE								
Tigecycline (TGC)	0.5-4	0.5-2	1-4	0.5-2	1-4	1-4	0.5-2	0.5-2
PHENICOL								
Chloramphenicol (C)	4-32	-	-	-	-	-	-	-
FLUOROQUINOLONES								
Ciprofloxacin (CIP)	0.125-2	0.25-1	0.0625-2	0.0625-1	0.0625-2	0.0625-1	0.0625-1	0.0625-1
Levofloxacin (LVX)	-	0.5-2	1-4	0.5-2	1-4	0.5-8	0.25-1	0.25-1
Norfloxacin (NOR)	0.25-8	0.5-2	2-8	-	2-8	-	0.5-2	0.5-2
Ofloxacin (OFX)	-	-	-	-	-	0.5-2	-	-
QUINOLONE								
Nalidixic Acid (NA)	-	4-16	-	-	-	-	-	-
FOLATE PATHWAY ANTAGONIST								
Trimethoprim (TMP)	1-8	1-4	-	-	-	-	-	1-4
Trimethoprim-Sulfamethoxazole (SXT)	1-8	1-4	0.5-2	1-4	0.5-2	1-8	1-4	1-4
NITROFURAN								
Nitrofurantoin (FM)	32-128	16-64	32-128	16-64	32-128	-	16-64	16-64
FOSFOMYCINS								
Fosfomycin w/G6P (FF)	16-64	16-128	16-128	16-128	16-128	16-64	16-64	16-64
OTHER								
CPO detect	No	No	Yes	Yes	Yes	Yes	Yes	Yes
CPO detect Ambler class	No	No	Yes	Yes	Yes	Yes	Yes	Yes
ESBL	Yes	Yes	Yes	Yes	Yes	Yes	Yes	Yes



Gram Negative Combo (ID + MIC) Panels																
BD reference number	448103	448443	448445	448620	448781	448794	448805	448873	448878	449012	449026	449027	449040	449044	449045	449053
Panel Name	NMIC/ ID-76	NMIC/ ID-414	UNMIC/ ID-416	NMIC/ ID-415	NMIC/ ID-94	NMIC/ ID-402	UNMIC/ ID-409	UNMIC/ ID-403	NMIC/ ID-408	NMIC/ ID-418	NMIC/ ID-503	NMIC/ ID-504	NMIC/ ID-431	NMIC/ ID-435	NMIC/ ID-433	UNMIC/ ID-432
Guideline	EUCAST	EUCAST	EUCAST	EUCAST	CLSI	EUCAST	EUCAST	EUCAST	EUCAST	EUCAST	EUCAST	CLSI	CLSI	EUCAST	EUCAST	EUCAST
Antimicrobial (µg/ml) concentration range																
PENICILLIN																
Ampicillin (AM)	2-8	2-8	2-8	-	4-16	2-8	2-8	2-8	2-8	2-8	2-8	4-16	4-16	4-16	4-16	4-16
Mecillinam (MEC)	-	-	2-8	-	-	-	-	-	-	2-8	-	-	-	-	-	-
Temocillin (TEM)	-	-	2-8	-	-	-	4-32	-	4-32	-	4-32	-	-	-	-	-
Ticarcillin (TIC)	-	4-16	4-16	4-64	-	-	-	-	-	-	-	-	-	-	-	-
Piperacillin (PIP)	-	4-16	-	4-64	-	4-16	-	-	4-16	-	-	-	-	-	-	-
β-LACTAM COMBINATION AGENT																
Amoxicillin-Clavulanate (AMC)	-	-	-	-	4-16	-	-	-	-	-	-	-	4-16	-	-	-
Amoxicillin-Clavulanate (f) (AXC)	2-8	2-32	2-32	-	-	2-32	2-32	2-32	2-32	2-32	2-32	-	-	2-16	2-16	2-32
Ampicillin-Sulbactam (f) (SXA)	-	-	-	-	-	-	-	-	-	-	-	-	-	1-8	1-8	-
Ampicillin-Sulbactam (SAM)	-	-	-	-	-	-	-	-	-	-	-	4-16	-	-	-	-
Ceftazidime-Avibactam (CZA)	-	-	-	-	-	-	-	-	-	-	0.25-8	0.25-8	-	-	-	-
Ceftolozane-Tazobactam (CT)	-	-	-	-	-	-	-	-	-	-	-	-	1-8	-	1-4	-
Piperacillin-Tazobactam (TZP)	4-16	4-16	4-16	4-64	4-64	4-16	4-16	4-16	4-16	4-16	4-16	4-64	4-64	4-16	4-16	4-32
Ticarcillin-Clavulanate (TIM)	-	4-16	-	4-64	-	-	-	-	-	-	-	-	-	-	-	-
CEPHEMS																
Cefazolin (CZ)	1-4	-	-	-	-	-	-	-	-	-	-	2-16	4-16	4-32	4-32	4-32
Cefepime (FEP)	-	1-4	0.5-4	1-16	1-16	1-8	1-8	1-8	1-8	-	1-8	1-16	1-16	1-8	1-8	-
Cefixime (CFM)	-	-	0.25-1	-	-	-	-	0.5-2	-	-	-	-	-	-	-	0.5-4
Cefotaxime (CTX)	0.5-4	0.5-4	1-4	-	-	1-4	-	1-4	-	0.5-4	-	-	-	-	-	-
Cefoxitin (FOX)	-	4-16	4-16	-	4-16	-	4-16	-	4-16	-	-	-	-	-	-	-
Ceftazidime (CAZ)	0.5-8	0.5-4	-	1-16	1-16	0.5-8	1-8	0.5-8	1-8	0.5-8	-	-	-	-	-	-
Ceftazidime (CAZ)	-	-	-	-	-	-	-	-	-	-	1-8	2-16	2-16	1-8	1-8	2-16
Ceftriaxone (CRO)	-	-	-	-	1-32	-	1-4	-	1-4	-	1-4	1-4	1-32	1-4	1-4	1-4
Cefuroxime (CMX)	1-8	-	-	-	4-16	2-8	2-8	2-8	2-8	2-8	2-8	-	4-16	4-16	4-16	-
Cephalexin (CN)	2-16	4-16	4-16	-	-	-	-	4-16	-	4-16	-	-	-	-	-	-
Cephalothin (CF)	-	-	-	-	4-16	-	-	-	-	-	-	-	-	-	-	-
MONOBACTAMS																
Aztreonam (ATM)	1-16	-	-	1-16	2-16	-	-	-	-	1-16	-	-	-	-	-	-
CARBAPENEMS																
Ertapenem (ETP)	0.25-1	0.125-1	0.125-1	-	0.25-4	0.25-1	0.25-1	0.25-1	0.25-1	0.25-1	0.25-1	0.25-1	0.25-1	0.25-1	0.25-1	0.25-2
Imipenem (IPM)	1-8	0.25-8	0.25-8	0.125-8	1-8	0.25-8	0.25-8	0.25-8	0.25-8	0.25-8	0.25-8	0.25-8	0.25-4	0.25-8	0.25-8	0.25-8
Meropenem (MEM)	1-8	0.125-8	-	0.125-8	1-8	0.125-8	0.125-8	0.125-8	0.125-8	0.125-8	0.125-8	0.5-16	0.5-4	0.125-8	0.125-8	0.125-8
LIPOPEPTIDES																
Colistin (CL)	1-4	-	-	1-4	1-4	1-4	-	-	1-4	-	1-4	1-4	1-4	0.5-4	1-4	-
AMINOGLYCOSIDES																
Amikacin (AN)	4-16	4-16	4-16	4-16	8-32	4-16	4-16	-	4-16	4-16	4-16	8-32	8-32	8-32	8-32	8-32
Gentamicin (GM)	1-4	1-4	1-4	1-4	2-8	1-4	1-4	1-4	1-4	1-4	1-4	2-8	2-8	2-8	2-8	2-8
Tobramycin (NN)	1-4	1-4	-	1-4	-	1-4	-	1-4	1-4	1-4	-	-	-	-	-	2-8
TETRACYCLINES																
Minocycline (MI)	-	-	-	1-8	-	-	-	-	-	-	-	1-8	-	-	-	-
GLYCYLCYCLINE																
Tigecycline (TGC)	-	0.5-2	-	-	1-4	0.5-2	-	0.5-2	0.5-2	0.5-2	0.5-2	1-4	1-4	0.5-4	0.5-2	1-4
FLUOROQUINOLONES																
Ciprofloxacin (CIP)	0.125-1	0.25-1	0.25-1	0.25-2	0.5-2	0.25-1	0.25-1	0.25-1	0.25-1	0.125-1	0.25-1	0.125-2	0.5-2	0.0625-1	0.0625-1	0.25-1
Levofloxacin (LVX)	-	-	-	0.5-4	1-4	0.5-2	-	-	0.5-2	-	0.5-2	-	1-4	0.5-2	0.5-2	0.5-4
Norfloxacin (NOR)	-	0.5-2	0.5-2	-	-	-	0.5-2	-	-	-	-	-	-	-	-	-
QUINOLONE																
Nalidixic Acid (NA)	-	-	8-32	-	-	-	-	-	-	-	-	-	-	-	-	-
FOLATE PATHWAY ANTAGONIST																
Trimethoprim (TMP)	1-4	-	-	-	-	-	1-4	1-4	-	1-4	-	-	-	-	-	-
Trimethoprim-Sulfamethoxazole (SXT)	1-4	1-4	1-4	1-4	1-4	1-4	1-4	1-4	1-4	1-4	1-4	1-4	1-4	2-8	2-8	2-8
NITROFURAN																
Nitrofurantoin (FM)	16-64	-	16-64	-	16-64	-	16-64	16-64	-	32-128	-	-	16-64	-	-	32-128
FOSFOMYCINS																
Fosfomycin w/G6P (FF)	16-64	-	16-128	-	-	16-64	16-64	16-64	-	-	-	-	-	-	-	16-64
OTHER																
CPO detect	No	No	No	No	No	No	No	No	No	No	Yes	Yes	Yes	Yes	No	No
CPO detect Ambler class	No	No	No	No	No	No	No	No	No	No	No	No	No	No	No	No
ESBL	Yes	Yes	Yes	Yes	Yes	Yes	Yes	Yes	Yes	Yes	Yes	Yes	Yes	Yes	Yes	Yes



Gram Positive MIC Panels			
BD reference number	448439	448798	449055
Panel Name	PMIC-90	PMIC-88	PMIC-600
Guideline	EUCAST	EUCAST	EUCAST
Antimicrobial (µg/ml)			
PENICILLIN			
Ampicillin (AM)	2-8	2-8	2-16
Penicillin G (P)	0.0625-0.25	0.0625-0.25	0.125-0.5
Oxacillin (OX)	0.25-2	0.25-2	0.25-4
β-LACTAM COMBINATION AGENT			
Amoxicillin-Clavulanate (AMC)	-	-	2-8
CEPHEMS			
Cefoxitin (FOX)	2-8	2-8	2-16
Ceftaroline (CPT)	0.125-1	0.125-1	-
GLYCOPEPTIDES			
Vancomycin (VA)	0.5-4	0.5-8	1-16
Teicoplanin (TEC)	1-4	0.5-8	1-8
LIPOPEPTIDES			
Daptomycin (DAP)	-	0.5-4	1-4
AMINOGLYCOSIDES			
Amikacin (AN)	4-16	-	4-16
Gentamicin (GM)	1-4	1-4	1-4
Gentamicin-Syn (GMS)	500	500	500
Streptomycin-Syn (STS)	-	-	1000
Tobramycin (NN)	1-4	-	-
MACROLIDES			
Erythromycin (E)	0.25-2	0.25-2	0.25-4
TETRACYCLINES			
Tetracycline (TE)	0.5-2	0.5-2	0.5-2
Tigecycline (TGC)	-	0.25-1	-
FLUOROQUINOLONES			
Ciprofloxacin (CIP)	0.25-4	0.5-4	1-4
Levofloxacin (LVX)	-	-	1-8
Moxifloxacin (MXF)	0.25-1	0.25-1	0.25-1
NITROFURAN			
Nitrofurantoin (FM)	16-64	16-64	32-128
LINCOSAMIDES			
Clindamycin (CC)	0.25-1	0.25-1	0.25-1
FOLATE PATHWAY ANTAGONIST			
Trimethoprim (TMP)	1-4	-	-
Trimethoprim-Sulfamethoxazole (SXT)	1-4	1-4	2-8
ANSAMYCINS			
Rifampin (RA)	0.25-1	0.25-1	0.25-1
FOSFOMYCINS			
Fosfomycin w/G6P (FF)	16-64	16-64	8-32
OXAZOLIDNONES			
Linezolid (LZD)	0.5-4	0.5-4	2-8
CARBAPENEMS			
Imipenem (IPM)	-	2-8	-
OTHER			
Fusidic Acid (FA)	1-8	0.5-8	1-8
Mupirocin (MUP)	1-4	-	-
Mupirocin High level (MUH)	256	256	-
Inducible Macrolide resistance test	Yes	Yes	Yes



Gram Positive Emerge Panels		
BD reference number	448420	449009
Panel Name	PMIC-84	PMIC-96
Guideline	CLSI	EUCAST
Antimicrobial (µg/ml)		
PENICILLIN		
Ampicillin (AM)	0.25-16	1-16
Penicillin G (P)	0.0625-8	0.0625-0.25
Oxacillin (OX)	0.125-4	0.25-2
β-LACTAM COMBINATION AGENT		
Amoxicillin-Clavulanate (AMC)	2-8	-
CEPHEMS		
Cefazolin (CZ)	2-8	-
Cefoxitin (FOX)	2-8	2-8
Ceftaroline (CPT)	-	0.125-1
Moxalactam (MOX)	-	2-16
GLYCOPEPTIDES		
Vancomycin (VA)	0.5-16	0.5-8
Teicoplanin (TEC)	1-16	0.5-8
LIPOPEPTIDES		
Daptomycin (DAP)	0.5-4	0.25-4
AMINOGLYCOSIDES		
Gentamicin (GM)	0.5-8	1-4
Gentamicin-Syn (GMS)	500	500
Kanamycin (K)	-	8-32
Kanamycin-Syn (KS)	-	250
Tobramycin (NN)	-	1-4
Streptomycin-Syn (STS)	1000	-
MACROLIDES		
Erythromycin (E)	0.25-4	0.25-4
TETRACYCLINES		
Tetracycline (TE)	-	0.5-2
Doxycycline (D)	0.5-4	-
FLUOROQUINOLONES		
Ciprofloxacin (CIP)	0.5-2	0.5-4
Levofloxacin (LVX)	-	0.5-4
Moxifloxacin (MXF)	0.25-2	0.25-2
Norfloxacin (NOR)	1-16	-
NITROFURAN		
Nitrofurantoin (FM)	32-128	16-64
LINCOSAMIDES		
Clindamycin (CC)	0.125-4	0.25-1
FOLATE PATHWAY ANTAGONIST		
Trimethoprim (TMP)	0.5-8	0.5-4
Trimethoprim-Sulfamethoxazole (SXT)	0.5-8	0.5-4
ANSAMYCINS		
Rifampin (RA)	0.25-8	0.25-2
FOSFOMYCINS		
Fosfomycin w/G6P (FF)	16-64	16-64
OXAZOLIDNONES		
Linezolid (LZD)	2-8	0.5-4
CARBAPENEMS		
Imipenem (IPM)	-	1-8
GLYCYLCYCLINE		
Tigecycline (TGC)	-	0.125-1
PHENICOL		
Chloramphenicol (C)	1-16	1-16
OTHER		
Mupirocin (MUP)	0.5-4	0.5-8
Mupirocin High level (MUH)	256	256
Fusidic Acid (FA)	0.5-8	0.5-8
Inducible Macrolide resistance test	Yes	Yes



Gram Positive Combo (ID + MIC) Panels								
BD reference number	448444	448616	448619	448761	448796	449038	449057	448785
Panel Name	PMIC/ ID-93	PMIC/ ID-94	PMIC/ ID-90	PMIC/ ID-69	PMIC/ ID-88	PMIC/ ID-111	PMIC/ ID-600	SMIC/ ID-11
Guideline	EUCAST	EUCAST	EUCAST	CLSI	EUCAST	CLSI	EUCAST	CLSI/EUCAST
Antimicrobial (µg/ml) concentration range								
PENICILLIN								
Ampicillin (AM)	-	0.5-8	2-8	2-8	2-8	2-8	2-16	-
Amoxicillin (AMX)	-	-	-	-	-	-	-	0.25-4
Penicillin G (P)	0.0625-0.25	-	0.0625-0.25	0.0625-0.25	0.0625-0.25	0.125-8	0.125-0.5	0.03125-4
Oxacillin (OX)	0.25-2	-	0.25-2	0.25-2	0.25-2	0.25-2	0.25-4	-
β-LACTAM COMBINATION AGENT								
Amoxicillin-Clavulanate (AMC)	-	-	-	1-4	-	-	2-8	-
Amoxicillin-Clavulanate (f) (AXC)	-	2-8	-	-	-	-	-	-
CEPHEMS								
Cefepime (FEP)	-	-	-	-	-	-	-	0.5-2
Cefotaxime (CTX)	-	-	-	8-32	-	8-32	-	0.5-2
Cefoxitin (FOX)	2-8	-	2-8	2-8	2-8	2-8	2-16	-
Ceftaroline (CPT)	0.25-1	-	0.125-1	-	0.125-1	0.25-2	-	-
Cefuroxime (CFM)	-	-	-	-	-	-	-	0.25-2
Moxalactam (MOX)	2-16	-	-	-	-	-	-	-
GLYCOPEPTIDES								
Vancomycin (VA)	0.5-2	0.5-8	0.5-4	0.5-16	0.5-8	1-16	1-16	0.5-4
Teicoplanin (TEC)	0.5-4	0.5-2	1-4	1-16	0.5-8	1-16	1-8	1-4
LIPOPEPTIDES								
Daptomycin (DAP)	1-4	0.5-4	-	1-4	0.5-4	1-4	1-4	0.25-1
AMINOGLYCOSIDES								
Amikacin (AN)	-	-	4-16	-	-	-	4-16	-
Gentamicin (GM)	1-4	-	1-4	2-8	1-4	2-8	1-4	-
Gentamicin-Syn (GMS)	-	500	500	500	500	500	500	250-1000
Kanamycin (K)	8-32	-	-	-	-	-	-	-
Kanamycin-Syn (KS)	-	250	-	-	-	-	-	-
Tobramycin (NN)	1-4	-	1-4	-	-	-	-	-
Streptomycin-Syn (STS)	-	1000	-	-	-	-	1000	-
MACROLIDES								
Erythromycin (E)	0.25-2	0.25-8	0.25-2	0.25-4	0.25-2	0.25-4	0.25-4	0.0625-0.5
TETRACYCLINES								
Tetracycline (TE)	0.5-2	0.5-8	0.5-2	0.5-8	0.5-2	0.5-8	0.5-2	0.5-4
FLUOROQUINOLONES								
Ciprofloxacin (CIP)	-	0.5-4	0.25-4	0.5-2	0.5-4	0.5-2	1-4	-
Levofloxacin (LVX)	0.5-2	0.25-4	-	-	-	1-4	1-8	0.5-4
Moxifloxacin (MXF)	-	-	0.25-1	0.5-2	0.25-1	0.5-2	0.25-1	0.25-2
NITROFURAN								
Nitrofurantoin (FM)	-	16-64	16-64	16-64	16-64	16-64	32-128	-
LINCOSAMIDES								
Clindamycin (CC)	0.25-1	-	0.25-1	0.5-2	0.25-1	0.5	0.25-1	0.03125-0.5
FOLATE PATHWAY ANTAGONIST								
Trimethoprim (TMP)	-	-	1-4	-	-	-	-	-
Trimethoprim-Sulfamethoxazole (SXT)	1-4	0.5-2	1-4	1-4	1-4	1-4	2-8	0.5-2
ANSAMYCINS								
Rifampin (RA)	0.25-1	0.25-4	0.25-1	0.5-2	0.25-1	0.5-2	0.25-1	-
FOSFOMYCINS								
Fosfomycin w/G6P (FF)	8-32	16-128	16-64	-	16-64	-	8-32	-
OXAZOLIDINONES								
Linezolid (LZD)	1-4	0.5-8	0.5-4	1-4	0.5-4	1-4	2-8	0.5-4
CARBAPENEMS								
Imipenem (IPM)	-	1-8	-	2-8	2-8	-	-	-
Meropenem (MEM)	-	-	-	-	-	-	-	0.125-2
GLYCYLCYCLINE								
Tigecycline (TGC)	0.125-0.5	0.0625-0.5	-	-	0.25-1	0.25-1	-	-
PHENICOL								
Chloramphenicol (C)	-	1-16	-	-	-	-	-	2-8
OTHER								
Mupirocin (MUP)	0.5-4	-	1-4	-	-	-	-	-
Mupirocin High level (MUH)	256	-	256	256	256	256	-	-
Fusidic Acid (FA)	1-8	-	1-8	1-8	0.5-8	-	1-8	-
Inducible Macrolide resistance test	Yes	Yes	Yes	Yes	Yes	Yes	Yes	No